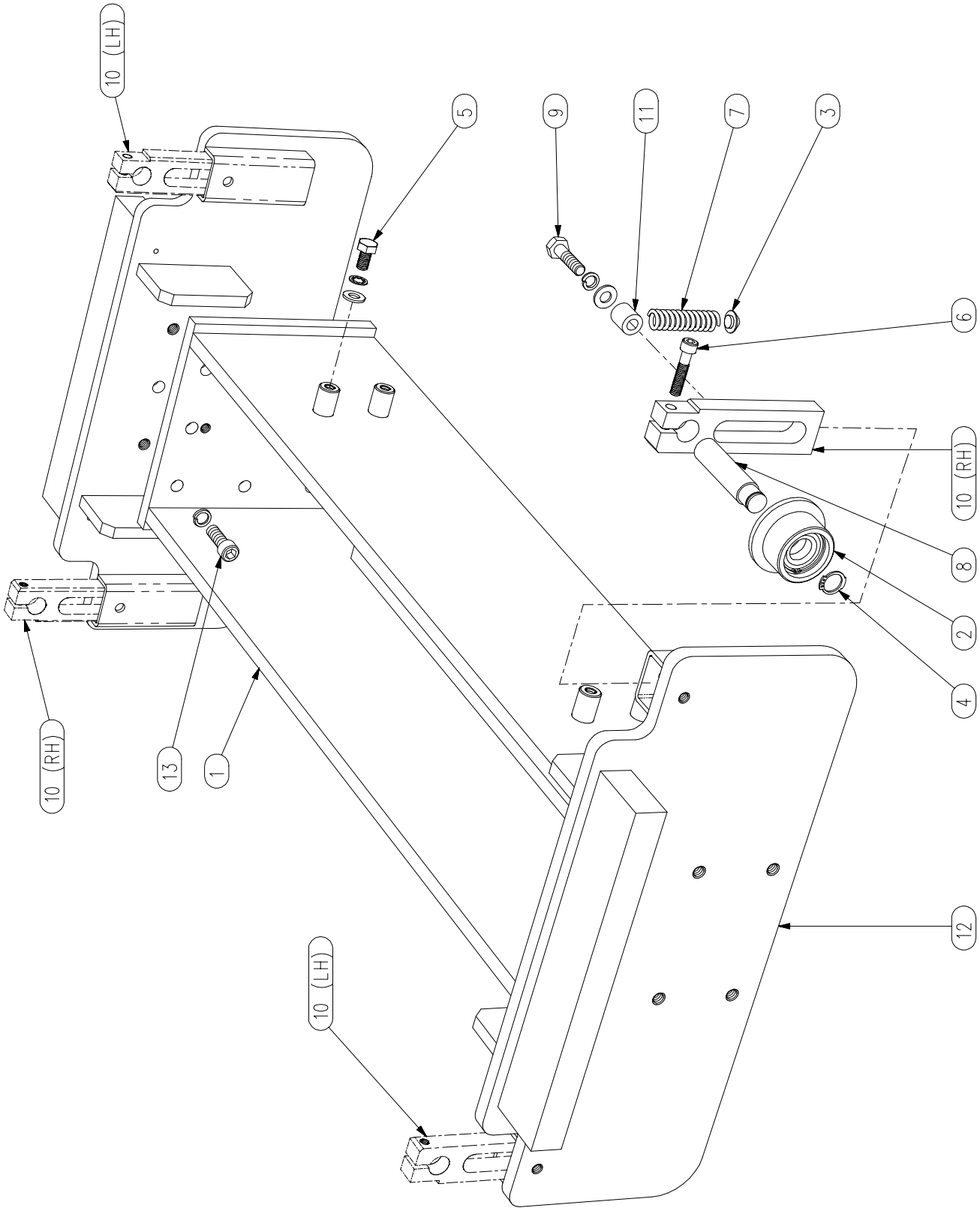


STANDARD FRAME ASSEMBLIES
Part Numbers 2630, 2650 & 2660



STANDARD FRAME ASSEMBLIES
Part Numbers 2630, 2650 & 2660

<u>ITEM No.</u>	<u>DESCRIPTION</u>	<u>QTY</u>	<u>PART No.</u>
1	CENTRE FRAME	1	Quote Serial No.
2	ROLLER ASSEMBLY (Parallel)	4	2654
	(Tapered)	4	2654T
3	SPRING THRUST PAD	4	183405
4	ROLLER CIRCLIP	4	183412
5	TANK MOUNTING BOLT SET	4	2009
6	AXLE CLAMP BOLT	4	2653
7	SPRING	4	2706
8	AXLE (Various Lengths) 88mm Long (std)	4	2655
	108mm Long (+20mm)	4	2665
	118mm Long (+30mm)	4	2666
	128mm Long (+40mm)	4	2667
	148mm Long (+60mm)	4	2668
9	AXLE BRACKET RETAINING BOLT SET	4	2709
10	AXLE BRACKET – RH	2	2652R
	AXLE BRACKET - LH	2	2652L
11	SPRING STOP	4	2705
12	END PLATE	2	Quote Serial No.
13	FRAME BOLT SET	12	9507