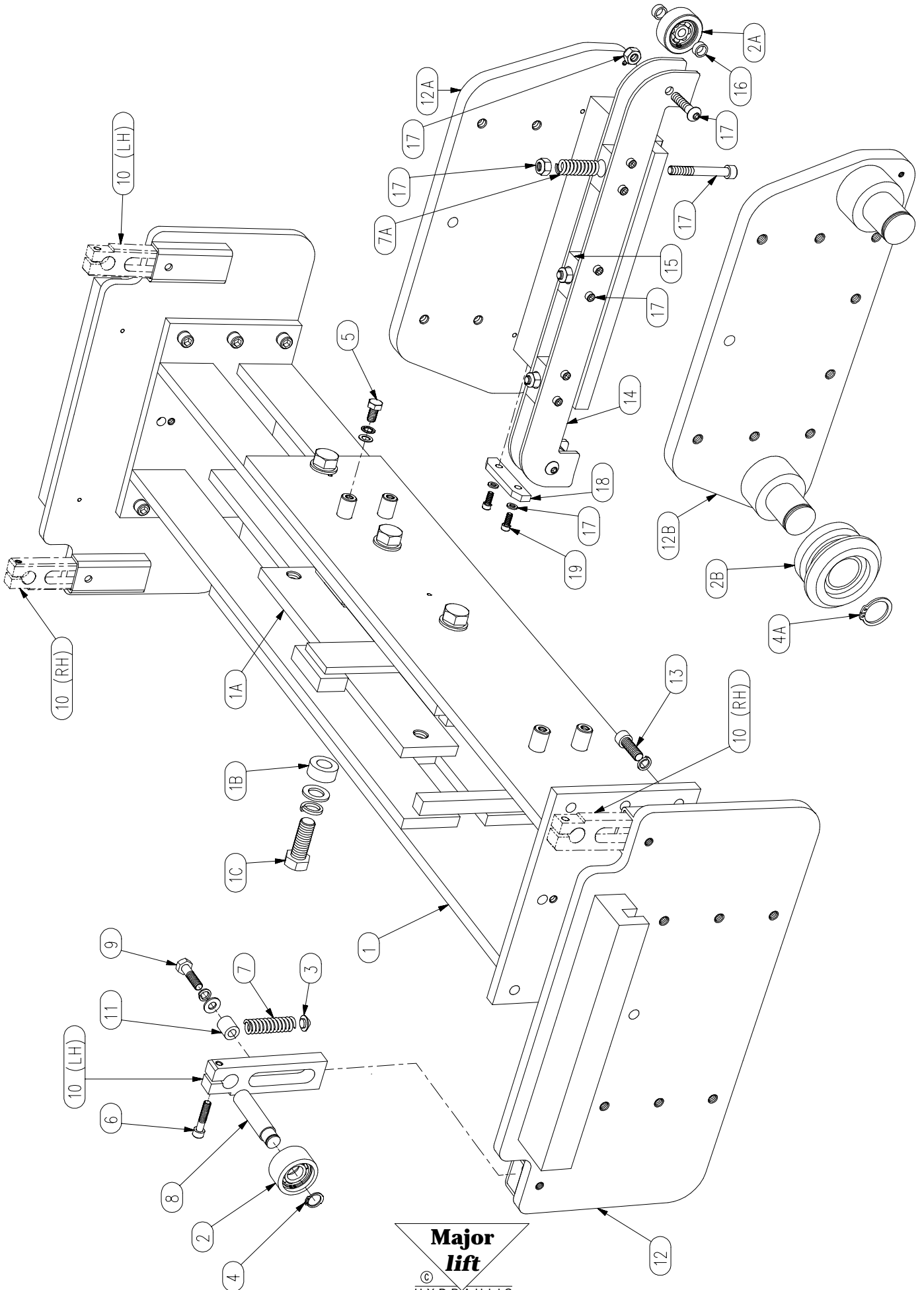


# SLIDING FRAME ASSEMBLY

Part Numbers 2700, 2800, 2810, 2910 & 2960



**Major lift**  
© HYDRAULIC EQUIPMENT

**SLIDING FRAME ASSEMBLY**  
**Part Numbers 2700, 2800, 2810, 2910 & 2960**

<u>ITEM No.</u>	<u>DESCRIPTION</u>	<u>QTY</u>	<u>PART No.</u>
1	CENTRE FRAME ASSEMBLY	1	Quote Serial No.
1A	KEEP PLATE	2	270113
1B	KEEP PLATE SPACER	2	270114
1C	FRAME BOLT SET	6	270115
2	ROLLER ASSEMBLY (STENHOJ)	4	183407
2A	ROLLER ASSEMBLY (STERTIL)	4	296204
2B	ROLLER ASSEMBLY (STERTIL LIFTS)	4	2804
3	SPRING THRUST PAD	4	183405
4	ROLLER CIRCLIP	4	183412
4A	ROLLER CIRCLIP (STERTIL LIFTS)	4	2005
5	TANK MOUNTING BOLT SET	2	2009
6	AXLE CLAMP BOLT	4	2653
7	SPRING	4	2706
7A	SPRING	6	296206
8	AXLE	4	2655
9	AXLE BRACKET RETAINING BOLT SET	4	2709
10	AXLE BRACKET - RH	2	2652R
	AXLE BRACKET - LH	2	2652L
11	SPRING STOP	4	2705
12	END PLATE WELD ASSEMBLY	2	270201
12A	END PLATE WELD ASSEMBLY	2	Quote
12B			Serial No.
13	FRAME BOLT SET	12	9507
14	ROLLER CARRIER	4	296202
15	SPRING ANCHOR BLOCK	6	296203
16	ROLLER SPACER	8	296211
17	ROLLER FIXINGS KIT	2	296207
18	PROTECTION STRIP	1	296205
19	CAP HEAD SCREW	2	3818