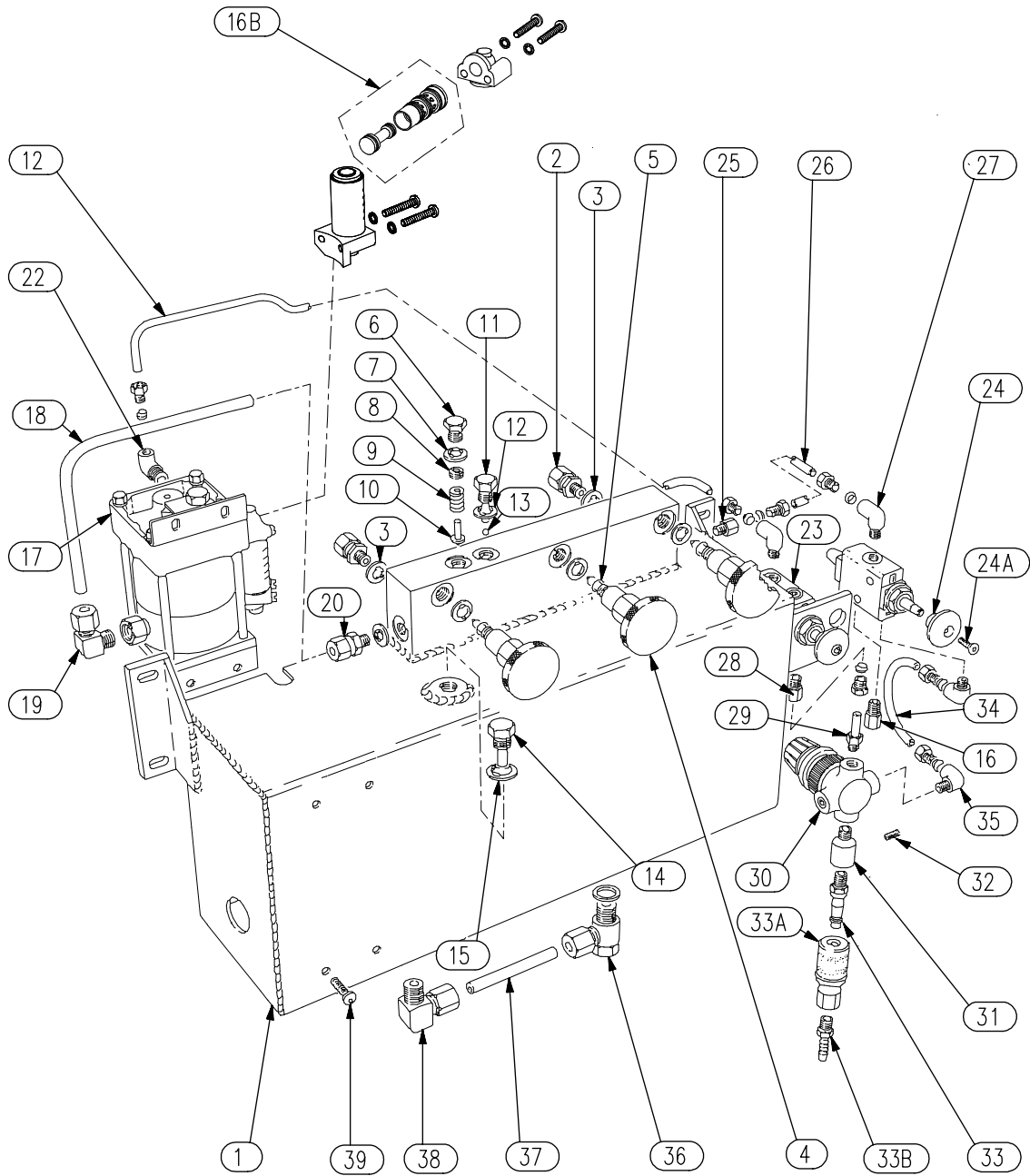


COMMERCIAL JACKING BEAM AIR / HYDRAULIC POWER PACK

Part Number 3900



COMMERCIAL JACKING BEAM AIR / HYDRAULIC POWER PACK

Part Number 3900

<u>ITEM No.</u>	<u>DESCRIPTION</u>	<u>QTY</u>	<u>PART No.</u>
1	RESERVOIR / VALVE BLOCK ASSY.	1	3901
2	OUTLET UNION	1	3903
3	BONDED WASHER	1	*
4	SHUT OFF VALVE	3	3902
5	'O' RING & 'A' RING	3	*
6	RELIEF VALVE PLUG	1	110316
7	BONDED WASHER	1	*
8	RELIEF VALVE COLLAR	1	110315
9	RELIEF VALVE SPRING	1	110314
10	RELIEF VALVE	1	110313
11	DELIVERY VALVE PLUG	1	5006
12	TUBE – CONTROL VALVE / AIR PUMP	1	391202
13	DELIVERY BALL	1	*
14	FILLER PLUG	1	3906
15	BONDED WASHER	1	*
16	BREATHER PLUG	1	3815
16B	AIR REPAIR KIT / AIR BARREL. SLEEVE. SPOOL	1	120308K
17	AIR / HYDRAULIC MOTOR	1	3911
	SEAL KIT – AIR / HYDRAULIC MOTOR	1	*
18	PUMP OUTLET PIPE	1	3913
19	ELBOW – MANIFOLD OIL DELIVERY	1	390503
20	STRAIGHT ADAPTOR	1	390502
22	ELBOW – AIR / HYDRAULIC MOTOR	1	390405
23	CONTROL VALVE (Comp. With item 24)	2	140404
24	CONTROL VALVE BUTTON	2	140405
24A	SCREW FOR ABOVE	2	140406
25	STRAIGHT ADAPTOR - MANIFOLD	1	390407
26	TUBE – REGULATOR / CONTROL VALVE	1	391203
27	ELBOW – CONTROL VALVE	2	390404
28	STRAIGHT ADAPTOR - CONTROL VALVE	1	390406
29	STRAIGHT STEM ADAPTOR	1	390408
30	PRESSURE REGULATING VALVE	1	390402
31	AIR INLET ADAPTOR	1	3908
32	ADAPTOR CLAMP SCREW	1	3909
33	AIR INLET TAIL PIECE	1	39101
33A	AIR INLET CHUCK	1	39102
33B	AIR HOSE ADAPTOR	1	39103
34	TUBE – REGULATOR / CONTROL VALVE	1	391201
35	ELBOW - REGULATOR	2	390403
36	BANJO COUPLING	1	390505
37	SUCTION PIPE	1	3914
38	ELBOW – OIL PUMP INLET	1	390504
39	MOTOR MOUNTING BOLT SET	1	3907
*	ITEMS CONTAINED IN SEAL KIT	1	39K