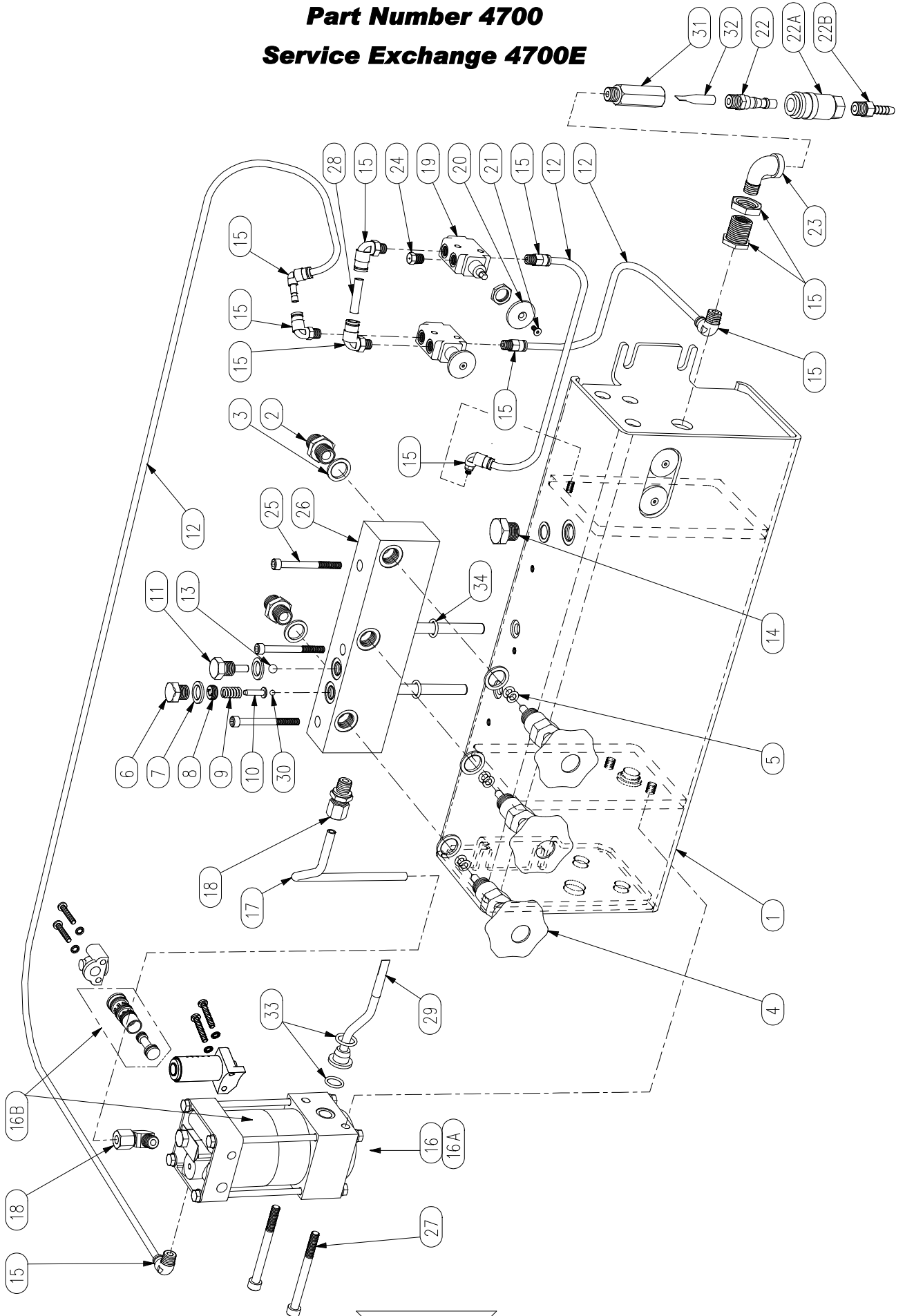


COMMERCIAL JACKING BEAM AIR/HYDRAULIC POWER PACK

Part Number 4700

Service Exchange 4700E



COMMERCIAL JACKING BEAM AIR / HYDRAULIC POWER PACK

Part Number 4700

Service Exchange 4700E

<u>ITEM No.</u>	<u>DESCRIPTION</u>	<u>QTY</u>	<u>PART No.</u>
1	RESERVOIR ASSEMBLY	1	4701
2	OUTLET UNION BODY	2	HH3903
3	BONDED WASHER	6	*
4	SHUT OFF VALVE ASSEMBLY	3	3902
5	'O' RING & 'AE' RING	3	*
6	RELIEF VALVE PLUG	1	110316
7	BONDED WASHER	2	*
8	RELIEF VALVE COLLAR	1	110315
9	RELIEF VALVE SPRING	1	110314
10	RELIEF VALVE PISTON	1	130313
11	DELIVERY VALVE PLUG	1	5006
12	NYLON TUBE SET	1	4712
13	DELIVERY VALVE BALL	1	*
14	FILLER PLUG	1	3906
15	PNEUMATIC FITTINGS KIT	1	4704
16	AIR MOTOR	1	4711
16A	AIR MOTOR SEAL KIT	1	*
16B	SPOOL VALVE & AIR CYLINDER KIT	1	120308K
17	PUMP OUTLET PIPE	1	4713
18	HYDRAULIC FITTINGS KIT	1	4705
19	CONTROL VALVE (c/w item 20)	2	140404
20	CONTROL VALVE BUTTON	2	140405
21	SCREW	2	140406
22	AIR INLET TAIL PIECE	1	39101
22A	AIR INLET CHUCK	1	39102
22B	AIR HOSE CONNECTOR	1	39103
23	ELBOW AIR INLET	1	1427
24	BREATHER PLUG	1	3815
25	VALVE BLOCK MOUNTING BOLT	3	4702
26	VALVE BLOCK	1	4703
27	MOTOR MOUNTING BOLT	2	4707
28	TRANSFER TUBE	1	4708
29	SUCTION PIPE ASSEMBLY	1	4714
30	RELIEF VALVE BALL	1	*
31	INLET FILTER BODY	1	1210
32	INLET FILTER	1	1211
33	'O' RING	2	*
34	'O' RING	2	*
*	ITEMS CONTAINED IN SEAL KIT	1	39K