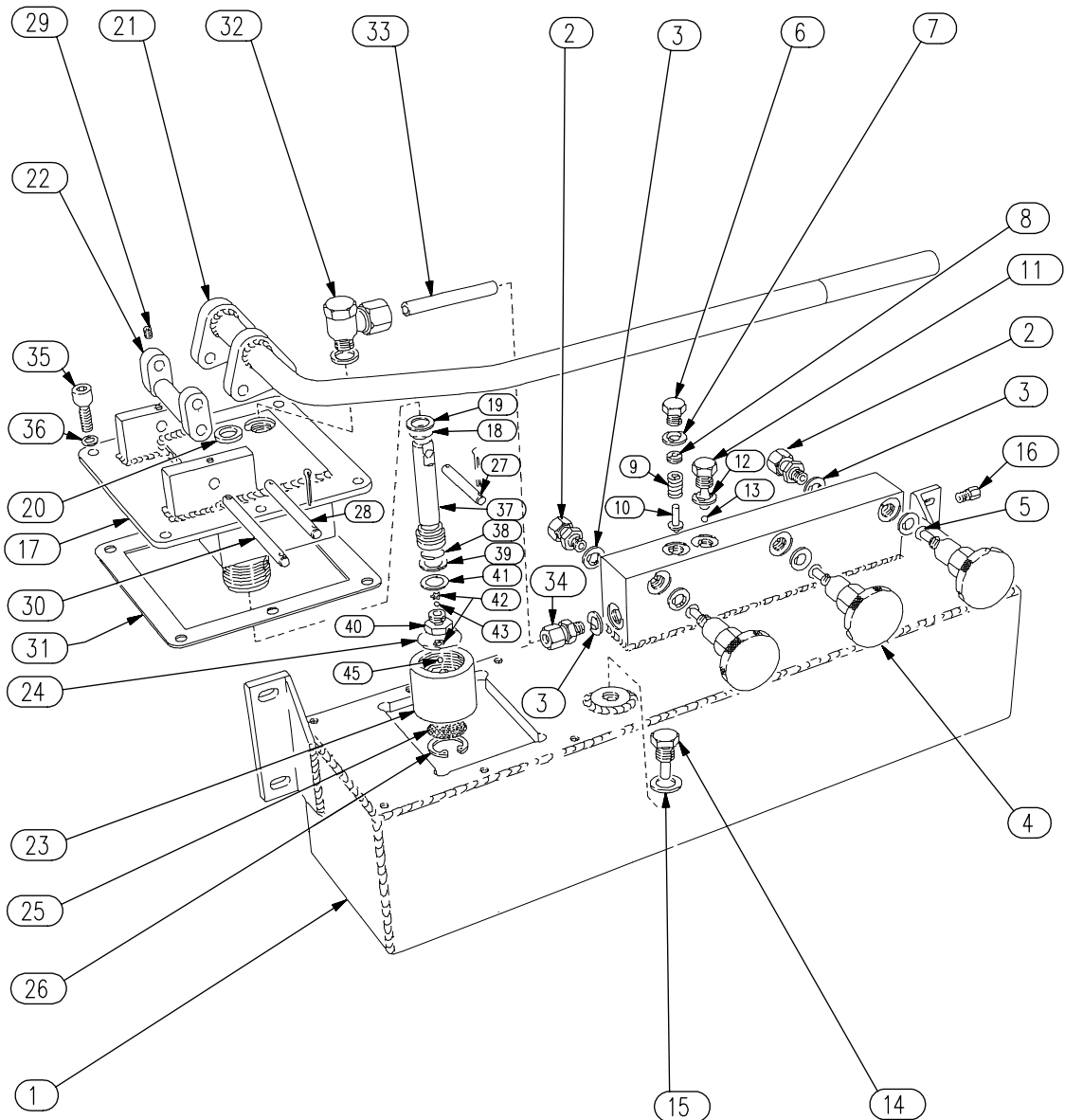


COMMERCIAL JACKING BEAM HAND PUMP

Part Number 3800



COMMERCIAL JACKING BEAM HAND PUMP

Part Number 3800

<u>ITEM No.</u>	<u>DESCRIPTION</u>	<u>QTY</u>	<u>PART No.</u>
1	RESERVOIR / VALVE BLOCK ASSY.	1	3801
2	OUTLET UNION ASSY.	2	3903
3	BONDED WASHER	6	*
4	SHUT OFF VALVE ASSY.	3	3902
5	'O' RING & 'A' RING	3	*
6	RELIEF VALVE PLUG	1	110316
7	BONDED WASHER	1	*
8	RELIEF VALVE COLLAR	1	110315
9	RELIEF VALVE SPRING	1	110314
10	RELIEF VALVE	1	110313
11	DELIVERY VALVE PLUG	1	5006
12	BONDED WASHER	1	*
13	DELIVERY BALL	1	*
14	FILLER PLUG	1	3906
15	COPPER WASHER	1	*
16	BREATHER PLUG	1	3815
17	PUMP HEAD ASSEMBLY	1	3802
18	'O' RING	1	*
19	'A' RING	1	*
20	WIPER SEAL	1	*
21	HANDLE ASSY.	1	3803
22	HANDLE LINK ASSY.	1	3804
23	SUCTION VALVE SEAT	1	3806
24	'O' RING	1	*
25	SUCTION FILTER	1	1403144
26	FILTER RETAINER	1	3812
27	PLUNGER LINK PIN	1	3809
28	HANDLE LINK PIN	1	3808
29	LINK PIVOT RETENTION SCREW	2	3813
30	LINK PIVOT PIN	1	3807
31	PUMP HEAD GASKET	1	3810
32	BANJO CONNECTOR	1	3815601
33	HYDRAULIC CONNECTOR PIPE	1	3817
34	STRAIGHT CONNECTOR	1	381602
35	PUMP HEAD MOUNTING BOLT	8	3818
36	COPPER WASHER	8	*
37	PUMP PLUNGER	1	3805
38	'O' RING	1	*
39	'A' RING	1	*
40	BY - PASS VALVE SEAT	1	110306
41	COPPER WASHER	1	*
42	STAR WASHER	2	*
43	BY - PASS BALL	1	*
44	STAR WASHER	1	*
45	SUCTION BALL	1	*
*	ITEMS CONTAINED IN PUMP SEAL KIT	1	38K