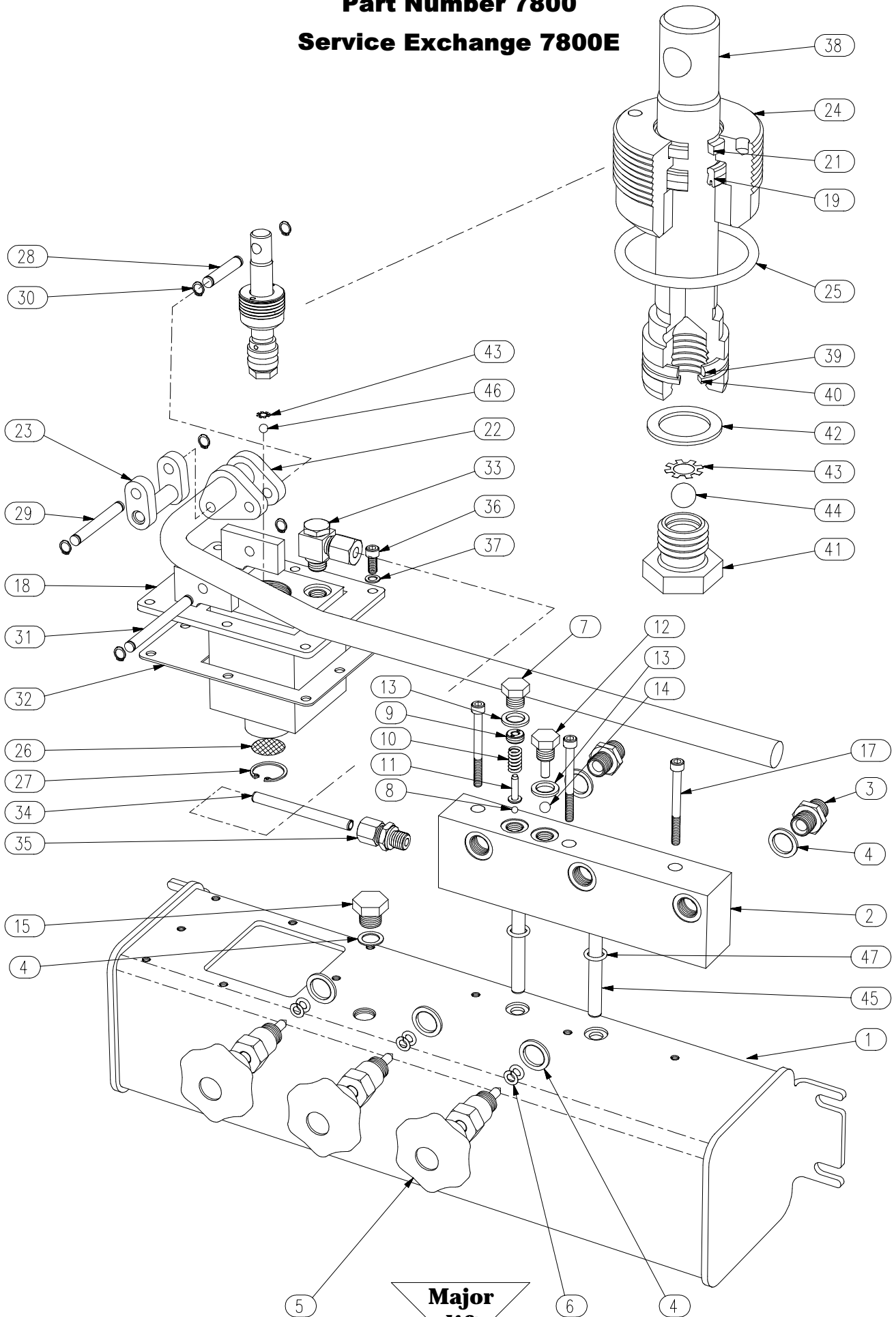


COMMERCIAL JACKING BEAM HAND PUMP

Part Number 7800

Service Exchange 7800E



COMMERCIAL JACKING BEAM HAND PUMP
Part Number 7800
Service Exchange 7800E

<u>ITEM No.</u>	<u>DESCRIPTION</u>	<u>QTY</u>	<u>PART No.</u>
1	RESERVOIR	1	7801
2	VALVE BLOCK	1	4703
3	OUTLET UNION BODY	2	HH3903
4	BONDED WASHER	6	*
5	SHUT OFF VALVE ASSEMBLY	3	3902
6	'O' RING & 'AE' RING	3	*
7	RELIEF VALVE PLUG	1	110316
8	RELIEF VALVE BALL	1	*
9	RELIEF VALVE COLLAR	1	110315
10	RELIEF VALVE SPRING	1	110314
11	RELIEF VALVE PISTON	1	130313
12	DELIVERY VALVE PLUG	1	5006
13	BONDED WASHER	2	*
14	DELIVERY VALVE BALL	1	*
15	BREATHER / FILLER PLUG	1	7819
16			
17	VALVE BLOCK MOUNTING BOLT	3	4702
18	PUMP HEAD WELD ASSEMBLY	1	7802
19	'U' RING	1	*
20			
21	WIPER SEAL	1	*
22	HANDLE ASSEMBLY	1	3803
23	HANDLE LINK ASSEMBLY	1	3804
24	PLUNGER GLAND	1	7803
25	'O' RING	1	*
26	SUCTION FILTER	1	1403144
27	FILTER RETAINER	1	3812
28	PLUNGER LINK PIN	1	3809
29	HANDLE LINK PIN	1	3808
30	CIRCLIP	6	3814
31	LINK PIVOT PIN	1	3807
32	PUMP HEAD GASKET	1	3810
33	BANJO CONNECTOR	1	7816
34	HYDRAULIC CONNECTOR PIPE	1	7817
35	STRAIGHT CONNECTOR	1	7816
36	PUMP HEAD MOUNTING BOLT	8	3818
37	COPPER WASHER	8	*
38	PUMP PLUNGER	1	3805
39	'D' RING	1	*
40	SOLID SPLIT AE RING	1	*
41	BY-PASS VALVE SEAT	1	110306
42	COPPER WASHER	1	*
43	STAR WASHER	2	*
44	BYPASS BALL	1	*
45	RETURN PIPE	2	380106
46	SUCTION VALVE BALL	1	*
47	'O' RING	2	*
*	ITEMS CONTAINED IN SEAL KIT	1	38K