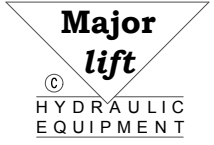
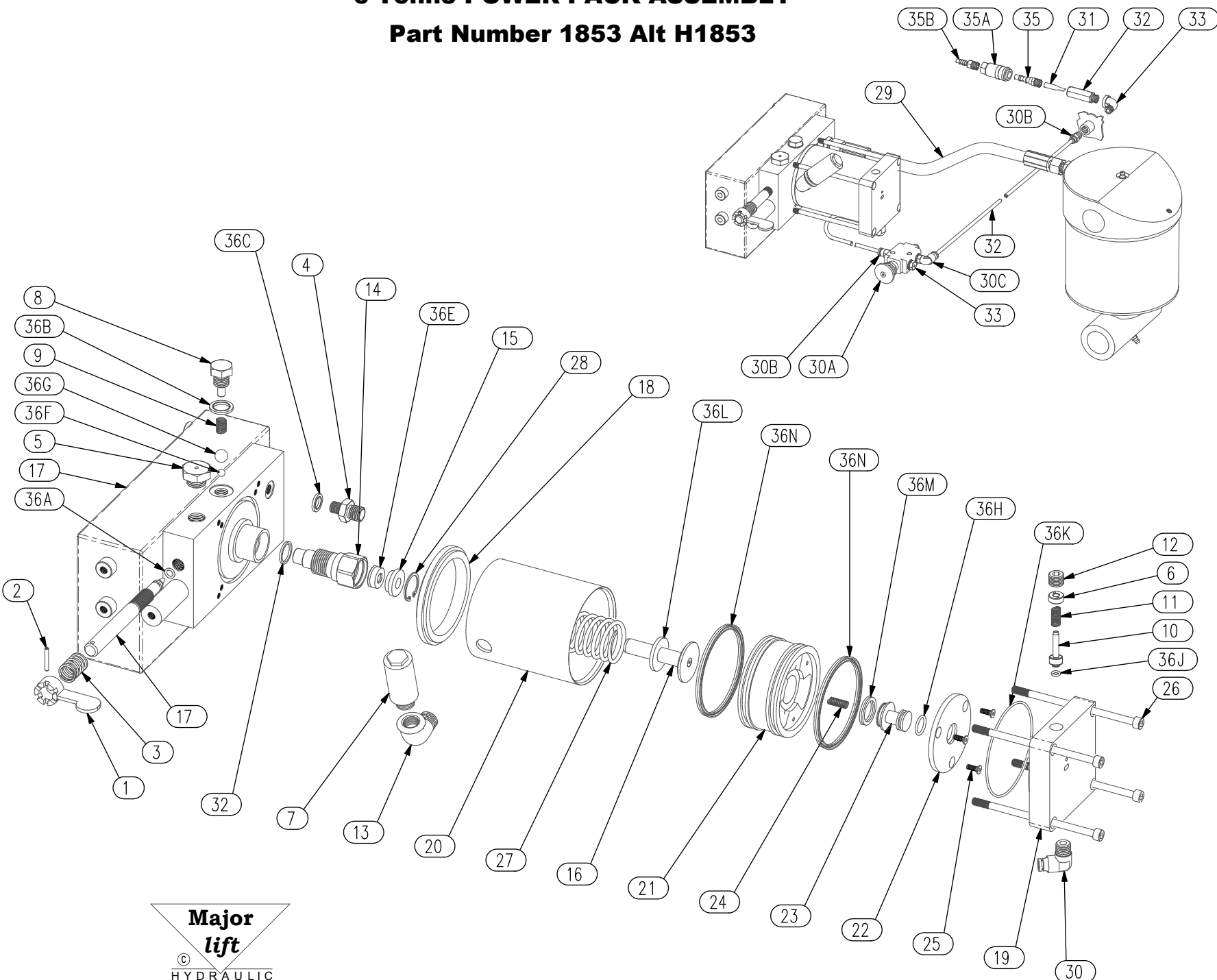


6 Tonne POWER PACK ASSEMBLY

Part Number 1853 Alt H1853



6 Tonne POWER PACK ASSEMBLY

Part Number 1853 Alt H1853

<u>ITEM</u>	<u>DESCRIPTION</u>	<u>QTY</u>	<u>PART No.</u>
1	RELEASE LEVER ASSEMBLY	1	110307
2	LEVER RETAINING PIN	1	110308
3	RELEASE LEVER SPRING	1	110310
4	OUTLET / INLET UNION	1	110311
5	BREATHER / FILLER PLUG	1	110312
6	RELIEF VALVE ADJUSTING COLLAR	1	110315
7	SILENCER	1	120315
8	DELIVERY VALVE PLUG	1	140302L
9	DELIVERY VALVE SPRING	1	140304L
10	RELIEF VALVE PISTON	1	145311
11	RELIEF VALVE SPRING	1	145312
12	RELIEF VALVE CAP	1	145313
13	ELBOW 3/8" M+F AIR INLET	1	145314
14	PUMP BARREL	1	165308
15	PLUNGER GLAND	1	165309
16	PUMP PLUNGER ASSEMBLY	1	165310
17	VALVE BLOCK / RESERVOIR ASSEMBLY	1	185301 Alt H185301
18	CYLINDER ADAPTOR	1	185302
19	CYLINDER END CAP	1	185303
20	AIR CYLINDER	1	791102
21	AIR PISTON	1	791104
22	PISTON END PLATE	1	791105
23	SHUTTLE VALVE	1	791106
24	SHUTTLE VALVE SPRING	1	791107
25	COUNTERSUNK SOCKET SCREW	3	791111
26	CYLINDER CAP HEAD SCREW	4	791112
27	AIR PISTON RETURN SPRING	1	791113
28	GLAND RETAINER	1	850306
29	HOSE ASSEMBLY	1	1826
30	AIR VALVES AND FITTINGS KIT	1	1819
	Comprising Items 30A to 30C		
30A	Valve)	1	
30B	Straight Male Connector)	2	Parts of Item 30
30C	Male Elbow Adaptor)	2	
31	ELBOW	1	1427
32	NYLON TUBE SET	1	1815
33	BREATHER PLUG	1	1818
32	INLET FILTER BODY	1	1210
34	AIR INLET FILTER	1	1211
35	AIR INLET TAILPIECE	1	39101
35A	Air Inlet Chuck)	1	39102
35B	Air Hose Connector)	1	39103
36	SEAL KIT	1	1853K
	Comprising Items 36A to 36N		
36A	'O' Ring)	1	
36B	Bonded Seal)	1	
36C	Bonded Seal)	1	
36D	Copper Washer)	1	
36E	Rod Seal)	1	
36F	1/4" Ball)	1	
36G	7/16" Ball)	1	Parts of Seal Kit – Item 36
36H	'O' Ring)	1	
36J	'O' Ring)	1	
36K	'O' Ring)	1	
36L	PU Washer)	1	
36M	'U' Ring)	1	
36N	'U' Ring)	2	