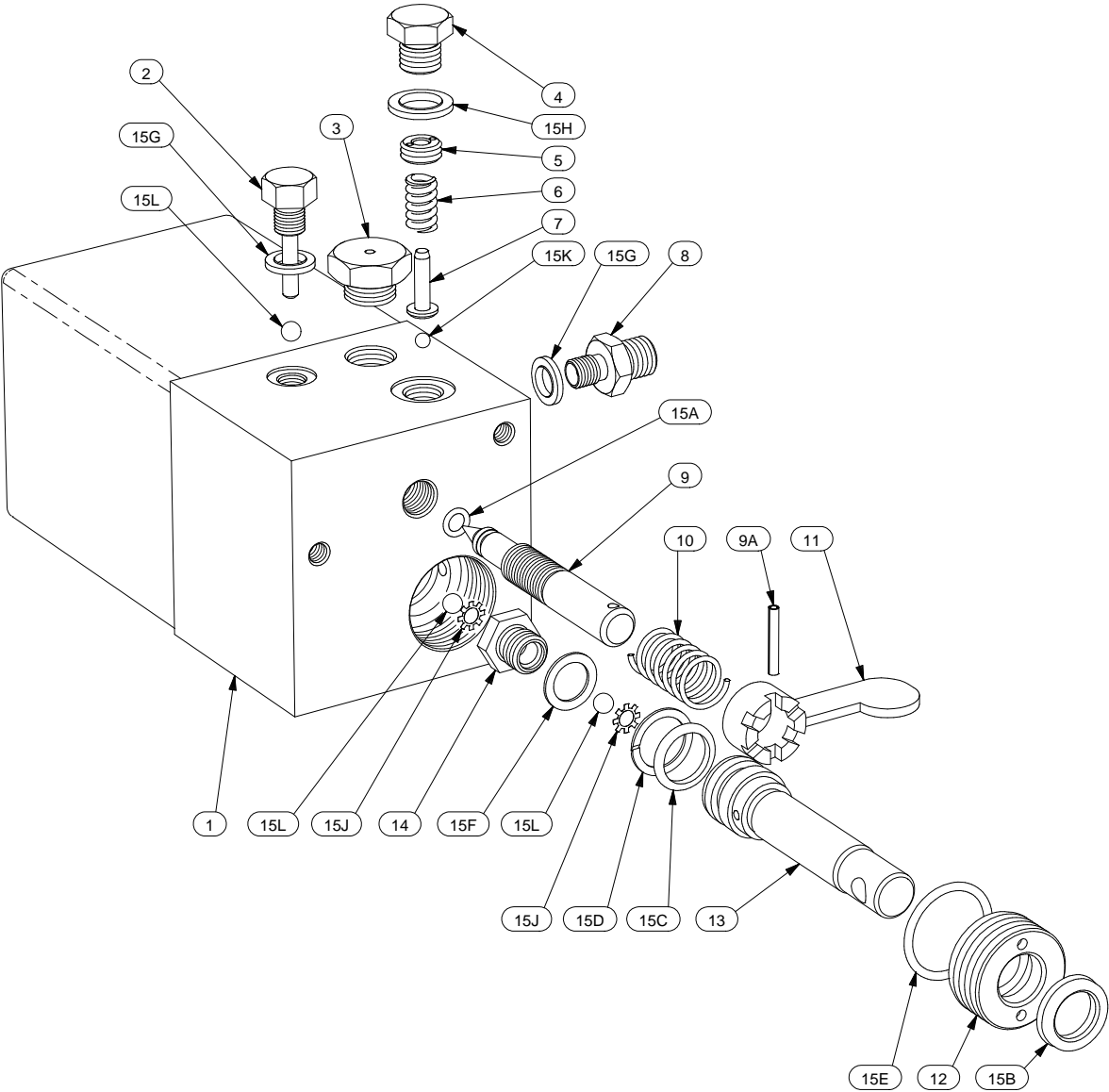


2.8 TONNE HAND OPERATED POWER PACK ASSEMBLY

Part Number H1503



2.8 TONNE HAND OPERATED POWER PACK ASSEMBLY
Part Number H1503

<u>ITEM No.</u>	<u>DESCRIPTION</u>	<u>QTY</u>	<u>PART No.</u>
1	VALVE BLOCK ASSEMBLY	1	H150301
2	DELIVERY VALVE PLUG	1	110303
3	FILLER PLUG	1	110312
4	RELIEF VALVE PLUG	1	110316
5	RELIEF VALVE ADJUSTING COLLAR	1	110315
6	RELIEF VALVE SPRING	1	110314
7	RELIEF VALVE PISTON	1	130313
8	OUTLET UNION	1	110311
9	RELEASE SPINDLE	1	110304
9A	LEVER RETAINING PIN	1	110308
10	RELEASE LEVER SPRING	1	110310
11	RELEASE LEVER	1	110307
12	PLUNGER GLAND	1	110302
13	PUMP PLUNGER	1	110305
14	BY-PASS VALVE SEAT	1	110306
15	POWER PACK SEAL KIT (Containing Items 15A to 15L)	1	1103K
15A	'O' RING	1	
15B	'U' RING	1	
15C	'D' RING	1	
15D	'A.E.' RING	1	
15E	O' RING	1	
15F	COPPER WASHER	1	
15G	BONDED WASHER	2	
15H	BONDED WASHER	1	
15J	STAR WASHER	2	
15K	RELIEF VALVE BALL	1	
15L	BALL	3	