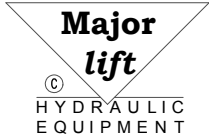
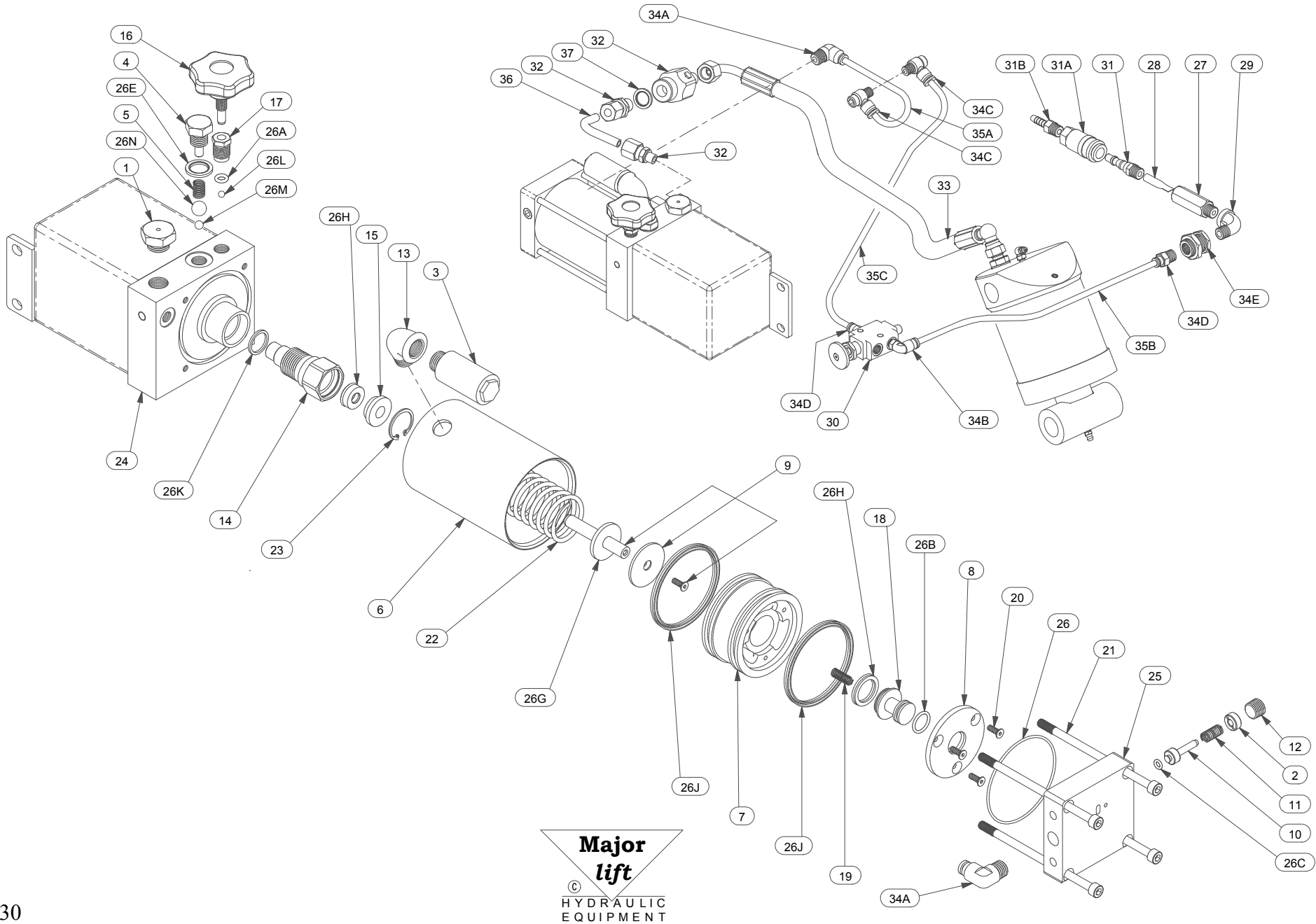


2.8 TONNE AIR OPERATED POWER PACK ASSEMBLY

Part Number HSN1653



2.8 TONNE AIR OPERATED POWER PACK ASSEMBLY

Part Number HSN1653

<u>ITEM No.</u>	<u>DESCRIPTION</u>		<u>QTY</u>	<u>PART No.</u>
1	FILLER PLUG		1	110312
2	RELIEF VALVE ADJUSTING COLLAR		1	110315
3	SILENCER		1	120315
4	DELIVERY VALVE PLUG		1	140302L
5	DELIVERY VALVE SPRING		1	140304L
6	AIR CYLINDER		1	145302
7	AIR PISTON		1	145304
8	PISTON END PLATE		1	145305
9	PUMP PLUNGER ASSEMBLY		1	165310
10	RELIEF VALVE PISTON		1	145311
11	RELIEF VALVE SPRING		1	185312
12	RELIEF VALVE CAP		1	145313
13	ELBOW 3/8" M+F AIR INLET		1	145314
14	PUMP BARREL		1	165308
15	PLUNGER GLAND		1	165309
16	RELEASE SPINDLE ASSEMBLY		1	5508
17	RELEASE SPINDLE GLAND		1	5509
18	SHUTTLE VALVE		1	791106
19	SHUTTLE VALVE SPRING		1	791107
20	C'SNK HEAD SCREW		3	791111
21	CYLINDER CAP HEAD SCREW		4	791112
22	AIR PISTON RETURN SPRING		1	791113
23	GLAND RETAINER		1	850306
24	VALVE BLOCK ASSEMBLY		1	HSN165301
25	CYLINDER END CAP		1	145303
26	POWER PACK SEAL KIT	Containing Items 26A-26N)	1	SN1653K
26A-D	<i>'O' Rings</i>		4	
26E	<i>Bonded Seal</i>		1	
26F	<i>Rod Seal</i>		1	
26G	<i>PU Washer</i>		1	
26H	<i>'U' Ring</i>		1	
26J	<i>Poly 'U' Ring</i>		1	
26K	<i>Copper Washer</i>		1	
26L-N	<i>Balls</i>		3	
27	AIR FILTER BODY		1	1210
28	AIR INLET FILTER		1	1211
29	ELBOW		1	1427
30	CONTROL VALVE		1	145404
31	AIR INLET TAILPIECE		1	39101
31A	AIR INLET CHUCK	Optional Extra	1	39102
31B	AIR HOSE CONNECTION	Optional Extra	1	39103
32	HYDRAULIC FITTINGS KIT		1	SN1624
33	HYDRAULIC HOSE ASSEMBLY		1	SN1525
34	AIR FITTINGS KIT	Containing Items 34A-34E)	1	SN1404
34A	<i>Elbow Male Adaptor</i>		2	
34B	<i>Swivel Elbow Taper</i>		1	
34C	<i>Banjo Elbow</i>		2	
34D	<i>Straight Male Adaptor</i>		1	
34E	<i>Bulkhead Fitting</i>		1	
35	POLYURETHANE TUBE SET		1	SN1605
36	PUMP OUTLET PIPE		1	SN1626
37	BONDED WASHER		1	7G